

BIOROL S.A.

Sectional Door

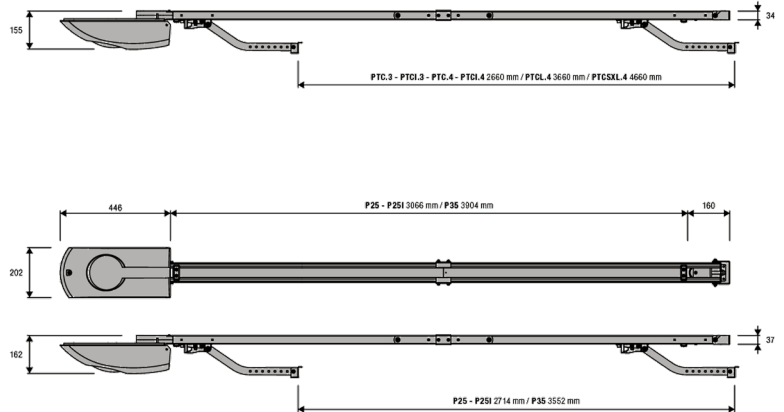
Residential

JIM3



KIT:

- 1 x JIM3 5B
- 1 x TO.GO 2VA



JIM3 - Specifications

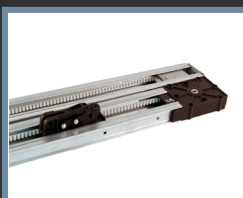
Irreversible 24Vdc geared motor for intensive use. Adjustable travel with mechanical stops. Amperometric sensor obstacle detection system to prevent crushing. Operation guaranteed even during electrical power cut, via batteries which intergrate perfectly into the motor. Step by step command. Built-in energy saving LED courtesy light. The encoder device ensures maximum safety and precision in the door moving phases.

Power supply	230 Vac (50-60Hz)
Motor supply	24 Vdc
Max absorbed current	0.7 A
Power consumption in stand-by	60 mA

Thrust	600 N
Opening speed	8.9 m/1'
Operation cycle	intensive use
Protection level	IP 40

Operating temperature	-20°C /+50°C
Max door surface	11 m²/max
Limit switch	electronic with encoder
Weight	6.2 kg

Works with:



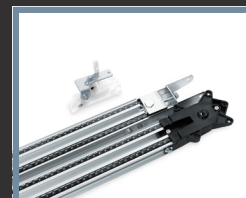
PTC.3 5B



PTC.4 5B

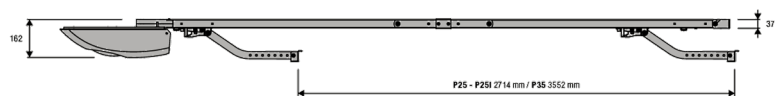
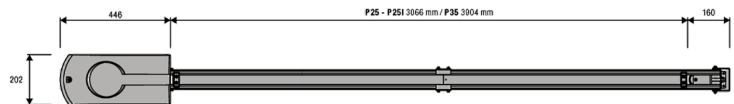
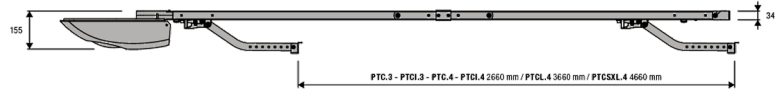


P25



P35

JIM4



KIT:

- 1 x JIM4 5B
- 1 x TO.GO 2VA

JIM4 - Specifications

Irreversible 24Vdc geared motor for intensive use. Adjustable travel with mechanical stops. Amperometric sensor obstacle detection system to prevent crushing. Operation guaranteed even during electrical power cut, via batteries which intergrade perfectly into the motor. Step by step command. Built-in energy saving LED courtesy light. The encoder device ensures maximum safety and precision in the door moving phases.

Power supply	230 Vac (50-60Hz)	Thrust	1200 N	Operating temperature	-20°C /+50°C
Motor supply	24 Vdc	Opening speed	8.9 m/1'	Max door surface	22 m²/max
Max absorbed current	1.5 A	Operation cycle	intensive use	Limit switch	electronic with encoder
Power consumption in stand-by	8 mA	Protection level	IP 40	Weight	7.6 kg

Works with:



PTC.3 5B



PTC.4 5B



PTCSXL.4



P25



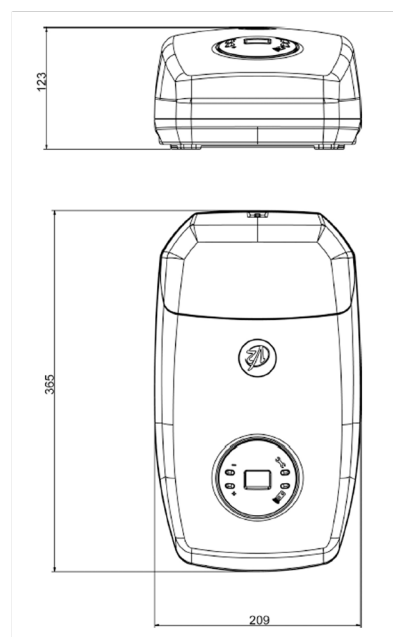
P35

JEDI1000



KIT:

- 1 x JEDI 1000
- 2 x PHOX2
- 1 x Guide 3,30 (2 x 1,65)

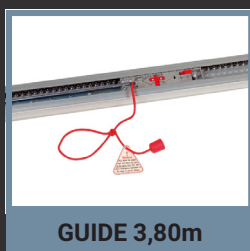


JEDI1000 - Specifications

Electromechanical irreversible actuator for sectional and balanced doors up to 15 m².
Maximum force 1000 N (100 Kg)

	JEDI-1000
Power supply	230Vac - 50Hz
Absorbed power	160W
Max accessories load 24V	12W
Protection fuses	SOURCE = 2,5A
Door area	≤ 15m ²
Average speed	110mm/s
Peak force	1000N
Nominal force	850N
Working temperature	-20 ÷ +40 °C
Rated Operating Time	> 4 min.
Protection degree	IP20
Weight	12Kg

Works with:



GUIDE 3,80m



