

DOCK LEVELER WITH SAFETY SYSTEM

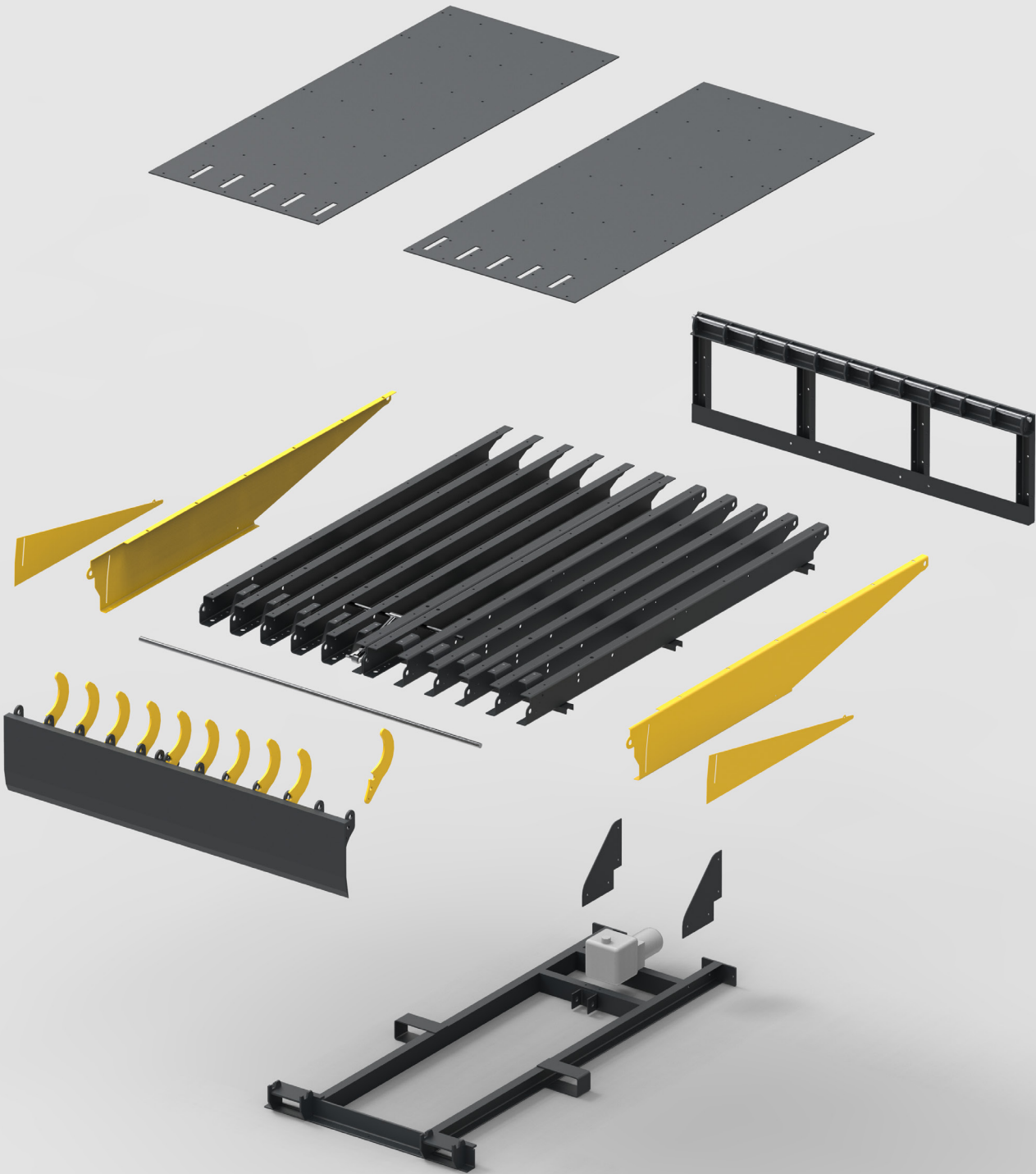


OLYMPOS
CONSTRUCTIONS

BIOROL

DOCK LEVELER

WITH UNIQUE SAFETY SYSTEM



OLYMPOS
CONSTRUCTIONS



DOCK LEVELER

WITH **UNIQUE** SAFETY SYSTEM

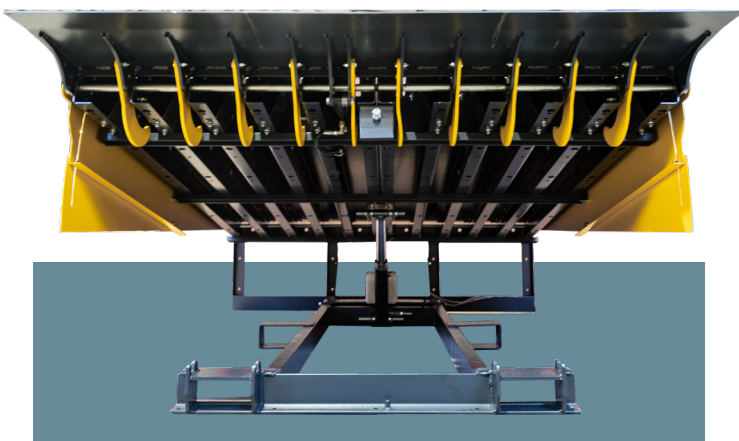
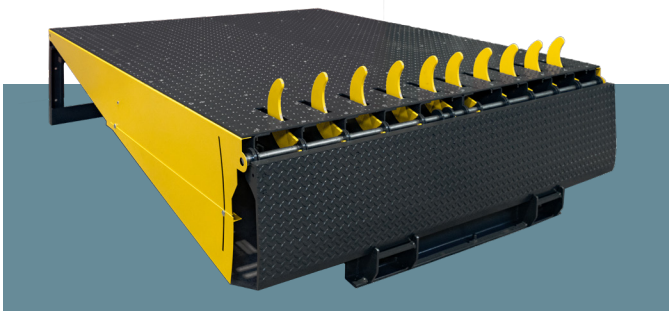
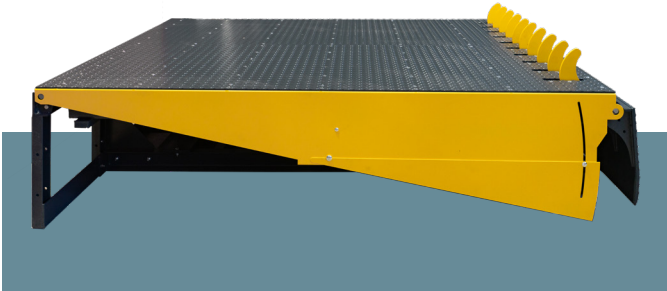
Dock leveler from OLYMPOS CONSTRUCTIONS with a collapsible barrier as a safety system.

QUICK INFO

- Assembled with bolts
- Low volume when packaged
- Low shipping cost
- Powder coated in RAL 7016 & RAL 1003
- Safety barrier:
 - prevents vehicles from falling off the dock
 - can be disassembled for easier transportation
 - blades can be replaced individually

TECHNICAL DATA

Nominal length	2500mm
Nominal width	2000/2200 mm
Vertical working range	Above dock: 0-520 mm Below dock: 0-360 mm
Platform tear plate	Thickness: 6mm (6/8)
Surface	RAL 7016 (anthracite grey) RAL 1003 (traffic yellow)
Load capacity	60kN (6 tons)
Hydraulic motor unit	1,1 kW
Main supply	400V 3-phase
Control unit protection class	IP54





OLYMPUS

CONSTRUCTIONS

BIOROL

10th km P.E.O Katerinis Thessalonikis,
Korinos 60062, Greece

+30 2351041860
info@biorol.gr

www.biorol.com